

Road Force® Elite

Customized for Mercedes-Benz Vehicles

NEW!



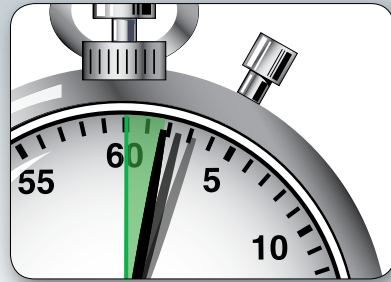
HUNTER
Engineering Company

Road Force® Elite at a glance



EXCLUSIVE

Unmatched Speed!



- ✓ Perform a **Road Force® test and balance** faster than any traditional balancer!

PATENTED

Vision System



- ✓ Eliminate error opportunities
- ✓ More information in less time

PATENTED

Diagnostic Load Roller



- ✓ Solve vibration problems
- ✓ Identify vehicle pulls
- ✓ Provide "new car ride"



Shown with options

PATENTED

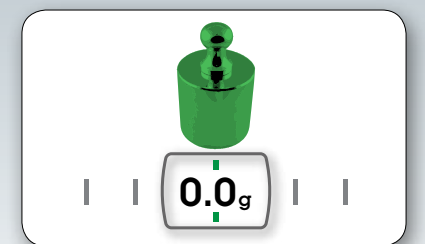
Enhanced SmartWeight®



- ✓ Even better balance
- ✓ Maximum efficiency
- ✓ More single weight solutions

PATENTED

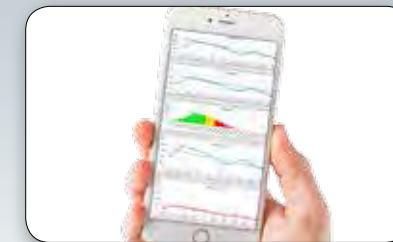
eCal Auto-Calibration



- ✓ True "self-calibration"
- ✓ No operator input required

EXCLUSIVE

HunterNet®



- ✓ View balancer usage
- ✓ Track weight usage

EXCLUSIVE

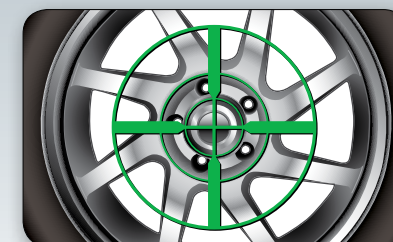
On-Demand Videos



- ✓ Simplify training
- ✓ Improve results

PATENTED

CenteringCheck®



- ✓ Ensure proper centering
- ✓ Eliminate setup errors

STANDARD

Touchscreen Interface



- ✓ Intuitive interface
- ✓ Quickly train new technicians

Road Force® Elite vision technology unlocks more benefits in less time!



Standard Balancer

VS.



Hunter Road Force® Elite

1:15-3:00+ **Floor to floor**

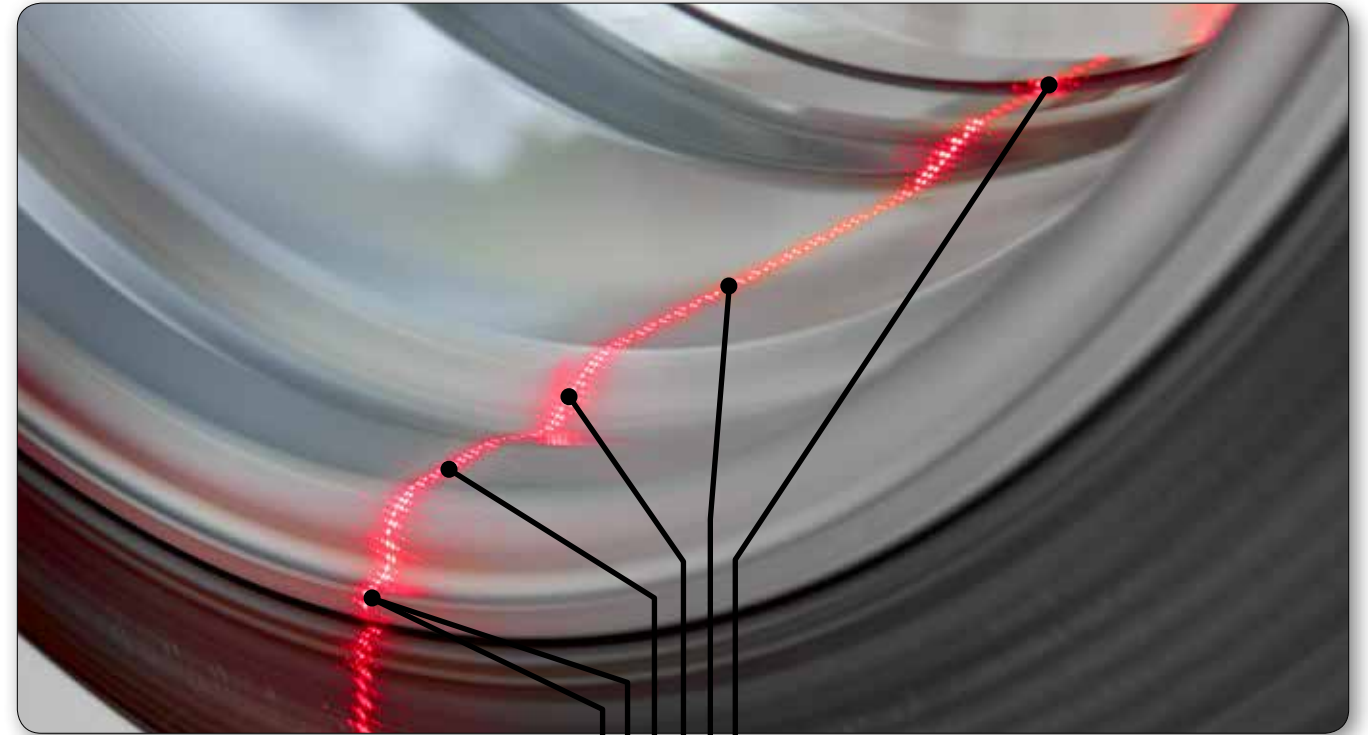
-Plus-

- Wheel dimensions
MANUAL
- Weight mode
MANUAL
- Spoke location
- Rim profile
- SmartWeight® optimized
- Rim runout
- Road force
- Tire pull
- Error-proof
- Forcematch prediction
- Unguided balance

1:10 **Floor to floor**

-Plus-

- Wheel dimensions
AUTOMATIC
- Weight mode
AUTOMATIC
- Spoke location
AUTOMATIC
- Rim profile
AUTOMATIC
- SmartWeight® optimized
AUTOMATIC
- Rim runout
AUTOMATIC
- Road force
AUTOMATIC
- Tire pull
AUTOMATIC
- Error-proof
AUTOMATIC
- Forcematch prediction
AUTOMATIC
- Guided balance



Wheel dimensions
AUTOMATIC



Automatically determines weight plane locations

Weight mode
AUTOMATIC



Selects clip or tape weight usage

Rim runout
AUTOMATIC



Calculates force-match solution



Spoke location
AUTOMATIC

Automatically hides tape weights behind spokes



SmartWeight® optimized
AUTOMATIC

Allows more single weight solutions



Rim profiled
AUTOMATIC

Creates three-dimensional model of the rim



Reduce operator error

- ✓ Automatically measures wheel dimensions
- ✓ Automatically selects weight mode
- ✓ Automatically measures rim runout

Road Force® Elite performs up to 47% faster than previous models



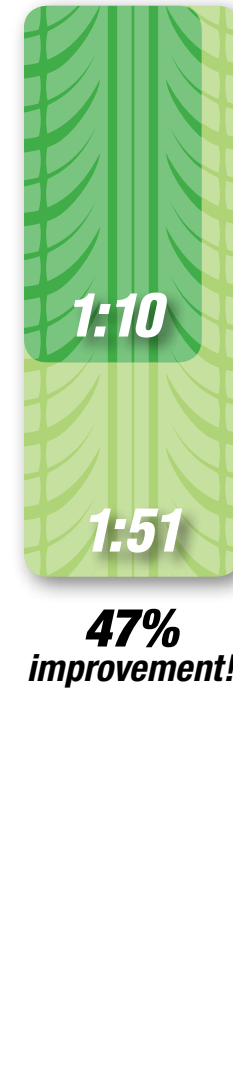
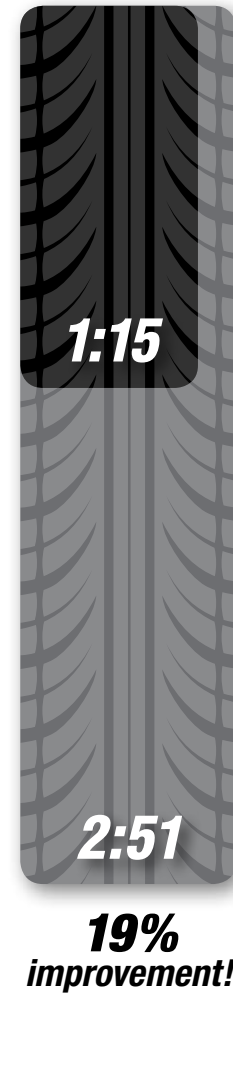
GSP9712
(Generations 1 and 2)
Up to 18 years old

GSP9722
(Generation 3)
Up to 10 years old

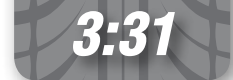
Road Force Touch
(Generation 4)
Up to 4 years old

Road Force® Elite
(Generation 5)
Up to 1 year old

Balance and measure road force



Balance and repair road force



EXCLUSIVE

Intuitive interface simplifies operation

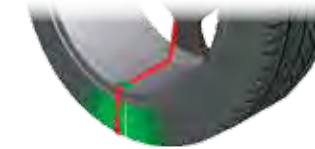
Balance operation



Rim cutaway displays selected weight mode



Switch text language with the push of a button



TruWeight™ provides live navigation through selection and placement of wheel weights



One touch to display rim dimensions

Road Force operation



Simple graphics illustrate how to optimize assembly



Road Force panel displays assembly value and limits



Live rim and tire conditions shown on-screen



Color-coding allows operator to visualize Road Force variations

Road Force Measurement® solves common vibration problems

Problem / Solution

Your customer complains about a vibration...



Original Equipment Manufacturer (OEM) technical service bulletins recommend the Road Force Touch balancer as the vibration solution

A simulated road test pinpoints the problem



The Road Force Touch balancer identifies the tire and rim contributions to radial-force vibration problems

Hold the tire and rotate the rim



Match-mounting the stiffest point on a tire to the low spot on a rim makes the assembly roll as round as possible

Your customer leaves with a "new car ride"!



✓ Your customer experiences a smooth ride on the same tires and wheels

How It Works

An unknown force vibrates the spindle



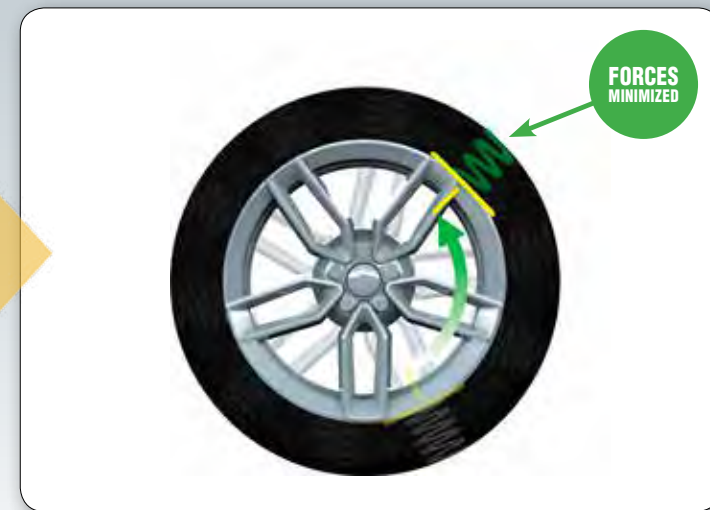
Vibration is transferred from the wheel, through the spindle to the customer

Specialized sensors detect the vibration



The Road Force Touch balancer detects radial forces with sensitive instruments

Match-mounting cancels the vibration



The Road Force Touch balancer duplicates tire and rim matching methods used by Original Equipment Manufacturers (OEMs)

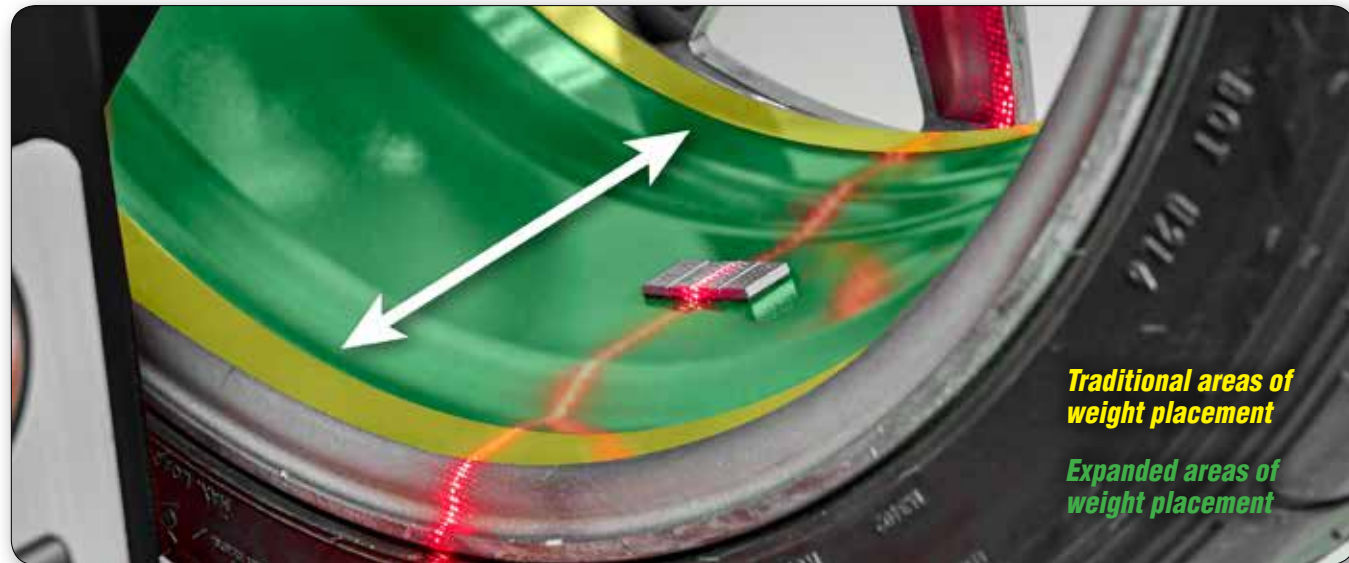
Your customer leaves with a "new car ride"!



✓ Radial force variation is minimized, ensuring your customer a smooth ride

Enhanced SmartWeight®

Additional weight locations save time and money



Traditional areas of weight placement

Expanded areas of weight placement

Road Force Elite vision system increases balancer accuracy and single weight solutions.

4

Modern vehicles are **4x** more sensitive to static vibration forces than couple or dynamic forces.

66

Avoid an average of **66 comebacks** per year by using SmartWeight.

202.1

An average shop saves **202.1 kg** per year with SmartWeight.



Smartweight®
Balancing Technology

Watch Your Savings Grow!



✓ See weight and labor savings based on **your** shop's numbers

PATENTED

StraightTrak® corrects tire pull

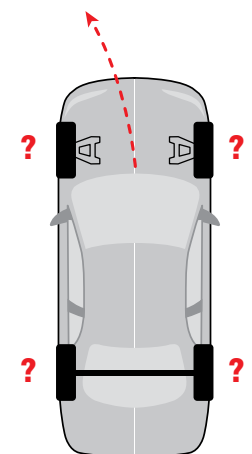
NEW!
Perform lateral force measurement without time penalty

Tires Just Rotated?

Customer complains about vehicle pulling to the left.

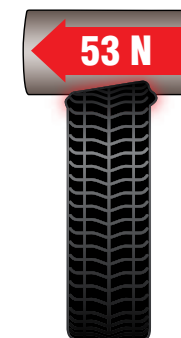


Mysterious Left Pull

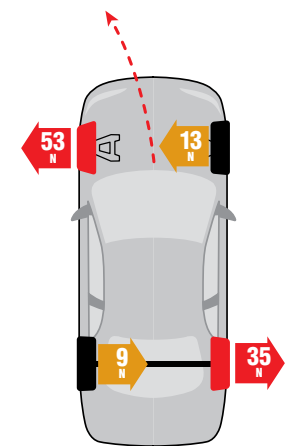


Measure Lateral Force to Identify Pull

Tire conicity can **ONLY** be measured accurately when the tire is under load.



Pull Identified

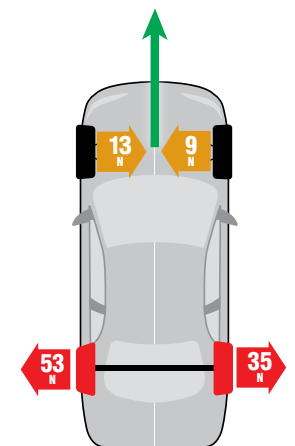


StraightTrak Delivers the Ultimate in Customer Satisfaction



Hunter suggests optimal wheel placement just like OEMs.

Pull Eliminated





COMING SOON!

- ✓ Allows you to view balancer usage online
- ✓ See trends like Road Force values and wheel types being serviced
- ✓ Track wheel weight usage and savings



GSP9700.com complimentary listing...

- ✓ Free listing on www.GSP9700.com
- ✓ Tens of thousands of hits each year
- ✓ Customers find you

Locate a GSP9700 Road Force Balancer



Let us advertise FOR YOU!

Your Shop Name

Street Address
 City, State Zip Code
 Phone number
 Approx. X miles from your location



Popular equipment upgrades

Wheel lift

- ✓ Safely service heavy, oversized wheels
- ✓ Precisely center all wheels



SpeedClamp

- ✓ Clamp wheels automatically
- ✓ Save time and effort
- ✓ Eliminate wingnut



PATENTED

HammerHead® top-dead-center laser

- ✓ Greater weight placement accuracy to avoid mistakes
- ✓ More single-spin balances improve productivity
- ✓ Overhead fluorescent light illuminates work area



Incorrect



Correct

Additional features make balancing faster and easier

EXCLUSIVE



Live 3D graphics



Bottom laser and wheel light

EXCLUSIVE



Most durable shaft in the industry



Integrated Inflation Station

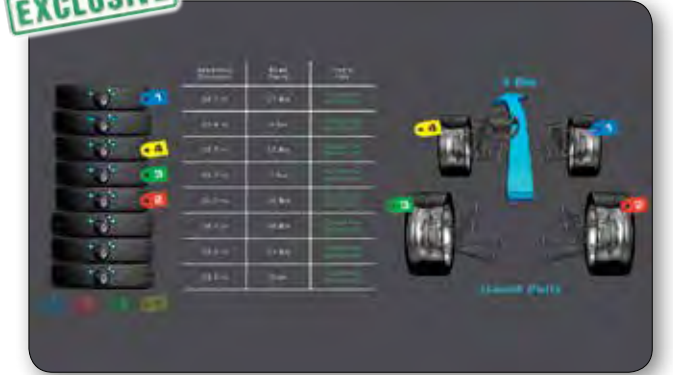
PATENTED



Servo Stop drive control

Automatically rotates and holds wheel at top-dead-center or bottom-dead-center weight locations.

EXCLUSIVE



TranzSaver™

Compares tire circumferences as specified by OEMs to prevent damage to All Wheel Drive (AWD) vehicles.

EXCLUSIVE

On-screen instruction makes everyone an expert!

High-definition videos instruct on a variety of balancing and tire changing topics.

- ✓ Covers basic techniques to more advanced procedures
- ✓ Instant access, easy navigation
- ✓ On-site training for your technicians



Technicians are guided with helpful tips and timesaving procedures.

Printer kit with storage shelf*

- ✓ Print Road Force Measurement® test results
- ✓ Win more approvals with clear and informative printouts

* Printer model may vary.



Specifications



RFE30MBE shown

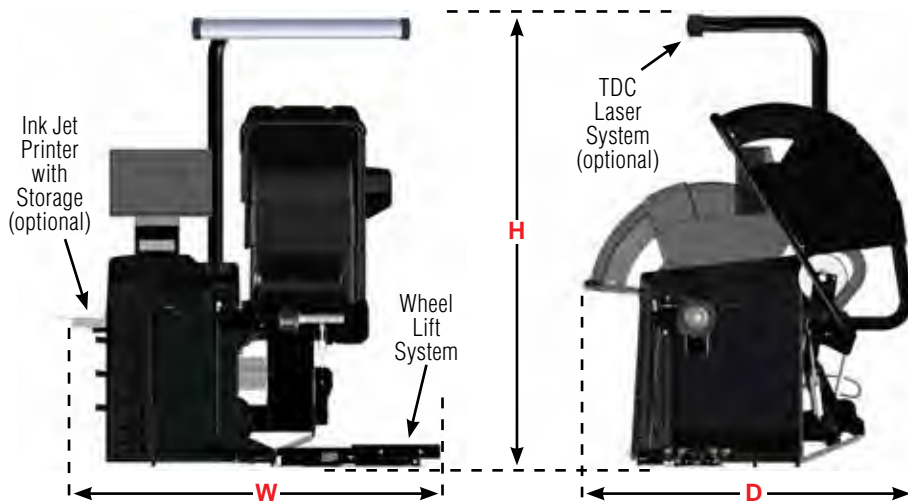
Power Requirements	196-253V, 10 amp, 50/60 Hz, 1 ph (Power cable includes: NEMA 20 amp plug, L6-20P)
Air Supply Requirements	7-12 bar (100-175 psi)
Roller Force	Variable up to 567 kg (1,250 lbs)
Capacity	
Rim Width	38 mm to 521 mm (1.5 in to 20.5 in)
Rim Diameter	254 mm to 762 mm (10 in to 30 in)*
ALU	356 mm to 1118 mm (14 in to 44 in)*
Max. Tire Diameter	1016 mm (40 in)
Max. Tire Width	508 mm (20 in)
Max. Tire Weight	79 kg (175 lbs)
Radial and Lateral Runout Accuracy	0.051 mm (0.002 in)
Imbalance Resolution	± 0.28 g (0.01 oz)
Placement Accuracy	512 positions, ± 0.35°
Balancing Speed	300 rpm
Motor	Programmable drive system and DC motor

* Extreme wheel sizes may require manual data entry.

Models**

	RFE30MBE	RFE10MBE
Wheel Lift System	✓	✓
SpeedClamp™ System	✓	
Width (W)	1626 mm (64 in) 1651 mm (65 in) with optional printer 1702 mm (67 in) with wheel lift 1854 mm (73 in) with wheel lift and printer	1626 mm (64 in) 1651 mm (65 in) with optional printer 1702 mm (67 in) with wheel lift 1854 mm (73 in) with wheel lift and printer
Height (H)	1778 mm (70 in) 2261 mm (89 in) with optional TDC Laser System	1778 mm (70 in) 2261 mm (89 in) with optional TDC Laser System
Depth (D)	1600 mm (63 in)	1600 mm (63 in)
Weight	395 kg (871 lb)	395 kg (871 lb)

** Road Force® Elite model numbers are trademarks of Hunter Engineering Company.



Because of continuing technological advancements, specifications, models and options are subject to change without notice.

HUNTER
 Engineering Company
www.hunter.com

0417AHE